



Superior hydrophilicity
for enhanced
osseointegration

HIOSSEN
From Osstem

Superior hydrophilicity for enhanced osseointegration

Nano-hydroxyapatite Hydrophilic surface for more successful, predictable implant healing.

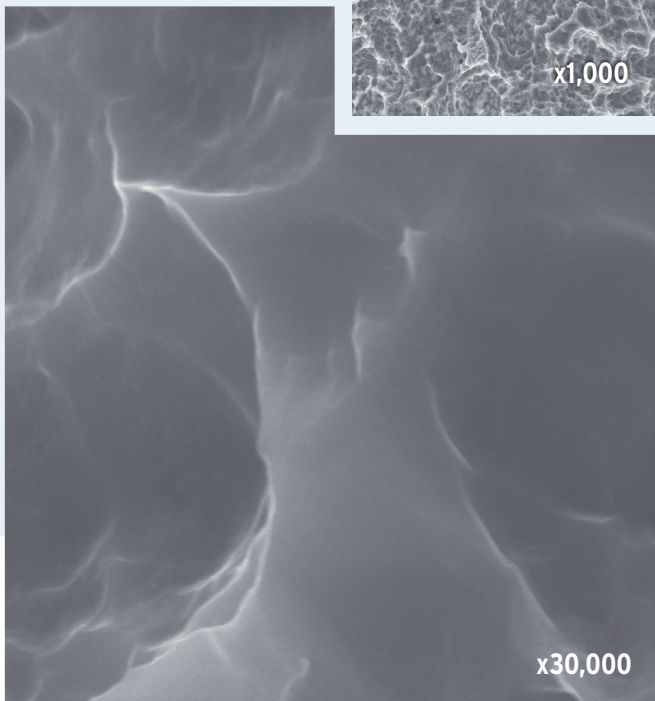
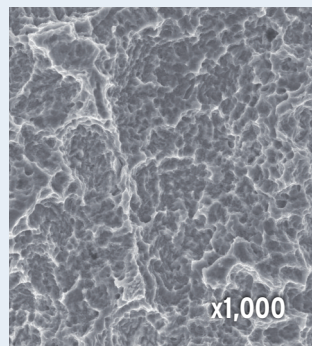
- Increased implant success rates
- Excellent initial stability
- Improved bone-to-implant contact (BIC)*
- Shortened treatment times by over 30%

The new Hydrophilic properties support this osseointegration in the early healing stages by providing more blood contact with the increased Sandblasted Acid-etched (SA) surface area, so it can start to clot faster.

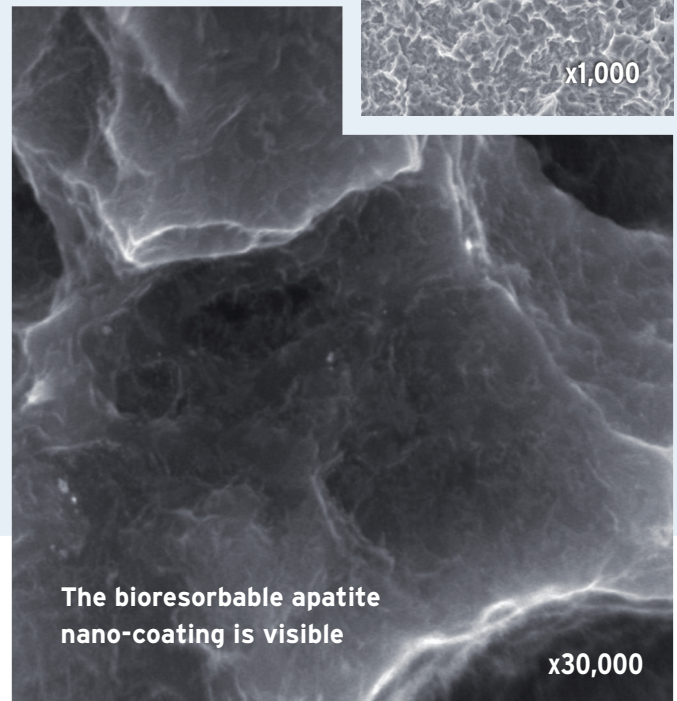
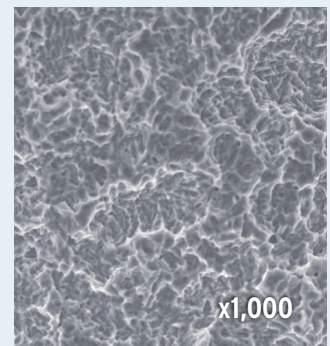
The NH Surface

The same clinically effective SA surface, but enhanced with a nano-layer of bioresorbable apatite with super hydrophilic properties.

SA



NH

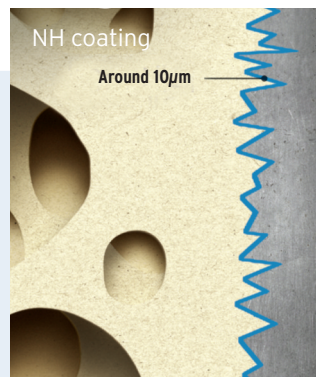
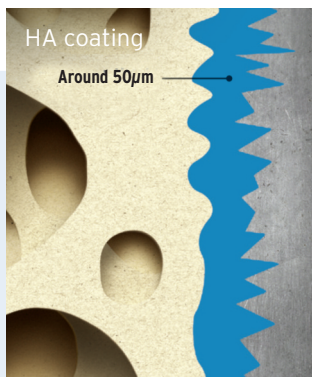


*39% more BIC for faster osseointegration.

ETIII NH

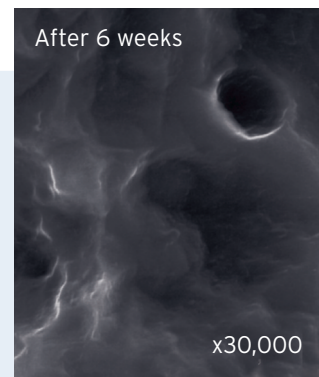
Ultra Thin Nano-Coating

Bioresorbable apatite coating is 10 nano meters thick.



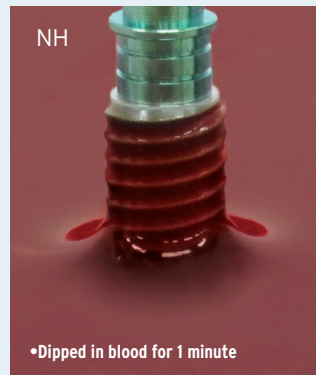
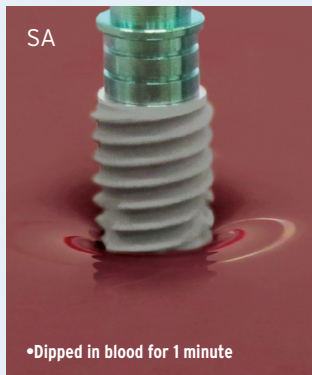
Bioresorbable Apatite

Bone forms directly to the SA surface as the apatite layer is resorbed during osseointegration.



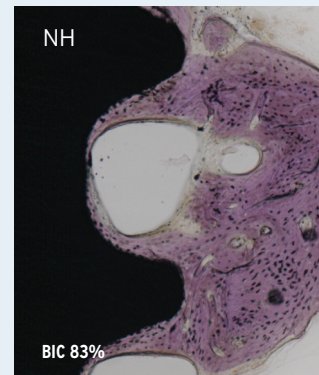
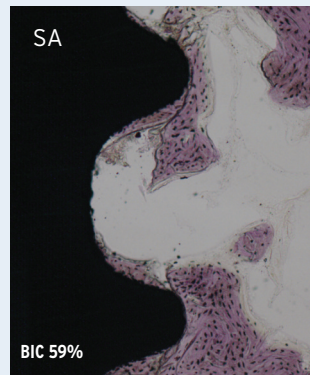
Superior Hydrophilicity

12% increase in platelet adhesion (better initial osseointegration) and 12% increase in cell differentiation (faster osseointegration) compared to SA.



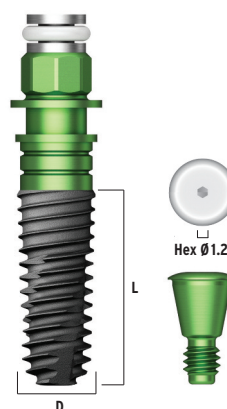
Significant Improvement to BIC




























The super hydrophilic bioresorbable apatite increases Bone to Implant Contact (BIC) by 39% compared with SA.



ETIII NH

- Submerged type implant with 11° Morse taper internal hex connection
- Taper body with optimized screw thread design for superior initial stability
- SA surface treated with Nano layer of bio-resorbable apatite with super hydrophilic properties
- NH is a dry implant (not stored in an aqueous solution)



Ø3.5 Hex 2.1 	L		8.5	10	11.5	13	15
							
	Product Code		ET3M3508B	ET3M3510B	ET3M3511B	ET3M3513B	ET3M3515B
Ø4.0 Hex 2.5 	L	7	8.5	10	11.5	13	15
							
	Product Code	ET3R4007B	ET3R4008B	ET3R4010B	ET3R4011B	ET3R4013B	ET3R4015B
Ø4.5 Hex 2.5 	L	7	8.5	10	11.5	13	15
							
	Product Code	ET3R4507B	ET3R4508B	ET3R4510B	ET3R4511B	ET3R4513B	ET3R4515B
Ø5.0 Hex 2.5 	L	7	8.5	10	11.5	13	15
							
	Product Code	ET3R5007B	ET3R5008B	ET3R5010B	ET3R5011B	ET3R5013B	ET3R5015B

HIOSSEN
From Osstem

OSSTEM[®]
IMPLANT